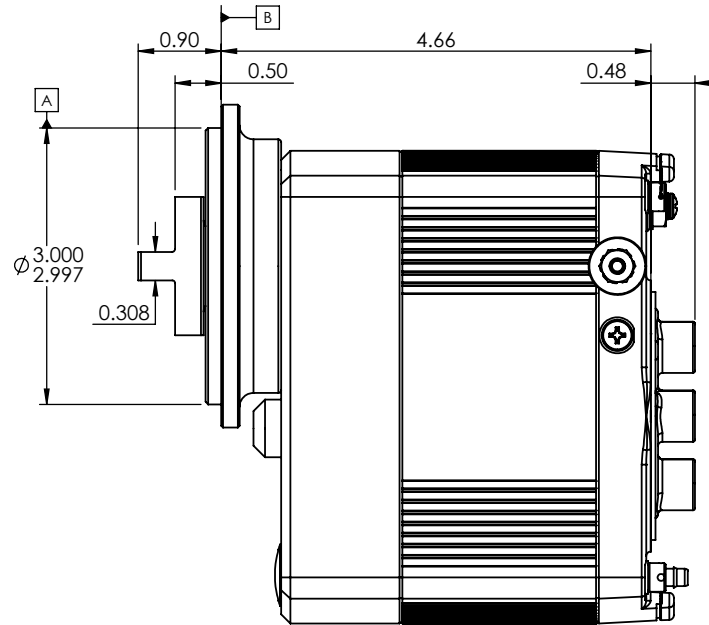
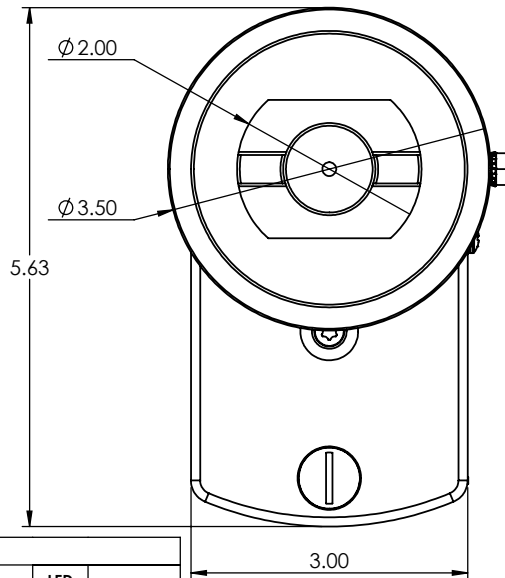
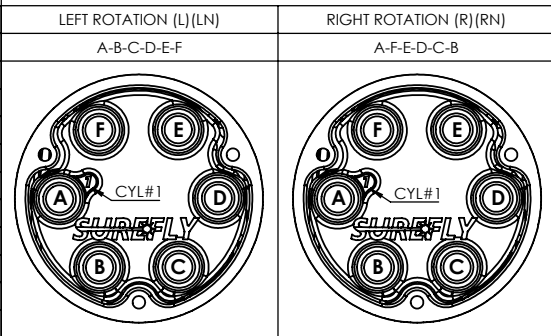


GENERAL SPECIFICATIONS	
IGNITION TYPE	WASTED SPARK
MAX. INPUT RPM	3500 RPM
OPERATING TEMPERATURE RANGE	-38°C TO +107°C
VOLTAGE INPUT RANGE	8.5 - 30 Vdc
OPERATING POWER REQUIREMENTS @ 2700 RPM	1.00±0.2 A @ 14 Vdc 0.50±0.2 A @ 28 Vdc
MANIFOLD PRESSURE INPUT RANGE	5 - 45 inHg
TIMING ACCURACY	±2°
BUILD	surefly_6_20120101_con_seed_4201.pof
CHECKSUM	00576ACE

REVISIONS				
ZONE	REV.	DESCRIPTION	DATE	APPROVED
ALL	PT-1	PROTOTYPE 1	04/14/2017	RVC
ALL	PT-2	PROTOTYPE 2	06/01/2017	RVC
ALL	IR	INITIAL RELEASE FOR PRODUCTION	05/21/2018	RVC
ALL	A	ECO 19-001	03/25/2019	RVC
ALL	B	ECO 20-001	03/30/2020	RVC
ALL	C	ECO 20-002	01/11/2021	RVC
ALL	D	ECO 21-004	03/01/2021	RVC
ALL	E	ECO 22-001	01/20/2022	RVC
ALL	F	ECO 22-002	04/01/2022	RVC
ALL	H	ECO 24-001	08/01/2024	RVC



DIP SWITCH SETTINGS								
ENGINE TIMING	IGNITION ROTATION	TIMING OPTION	DIP SWITCH				LED CODE ON=SHORT OFF=LONG	TIMING SCHEDULE
			1 L=OFF R=ON	2 V=OFF F=ON	3 20"=OFF 22"=OFF-ON 24"=ON-OFF 26"=ON-ON	4 12/SECOND =ERROR		
20°	LEFT (L)(LN)	VARIABLE	OFF	OFF	OFF	OFF	----	A-20
	LEFT (L)(LN)	FIXED	OFF	ON	OFF	OFF	----	F-20
	RIGHT (R)(RN)	VARIABLE	ON	OFF	OFF	OFF	----	A-20
	RIGHT (R)(RN)	FIXED	ON	ON	OFF	OFF	----	F-20
22°	LEFT (L)(LN)	VARIABLE	OFF	OFF	OFF	ON	----	A-22
	LEFT (L)(LN)	FIXED	OFF	ON	OFF	ON	----	F-22
	RIGHT (R)(RN)	VARIABLE	ON	OFF	OFF	ON	----	A-22
	RIGHT (R)(RN)	FIXED	ON	ON	OFF	ON	----	F-22
24°	LEFT (L)(LN)	VARIABLE	OFF	OFF	ON	OFF	----	A-24
	LEFT (L)(LN)	FIXED	OFF	ON	ON	OFF	----	F-24
	RIGHT (R)(RN)	VARIABLE	ON	OFF	ON	OFF	----	A-24
	RIGHT (R)(RN)	FIXED	ON	ON	ON	OFF	----	F-24
26°	LEFT (L)(LN)	VARIABLE	OFF	OFF	ON	ON	----	A-26
	LEFT (L)(LN)	FIXED	OFF	ON	ON	ON	----	F-26
	RIGHT (R)(RN)	VARIABLE	ON	OFF	ON	ON	----	A-26
	RIGHT (R)(RN)	FIXED	ON	ON	ON	ON	----	F-26



SureFly
Granbury, Texas

6 CYLINDER CONTINENTAL IGNITION

SCALE:	MATERIAL:	FINISH:
1:2	N/A	N/A
DIMENSIONS IN INCHES UNLESS OTHERWISE SPECIFIED		DATE:
TOLERANCES:		DRAWN BY:
ANGLES ±1°	0.X ±0.050	0.XX ±0.030
	0.XXX ±0.010	R. CONDY
SHEET: 1/1		PART NO:
		05/21/2018
		REV:
		SIM6C
		H